

# High speed and high-quality 1.6M eco-solvent printer



**THUNDERJET**  
BEYOND YOUR IMAGINATION

## AQ1601S



Bus shelter



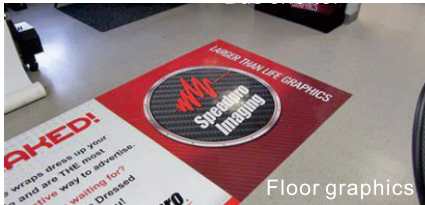
Banner



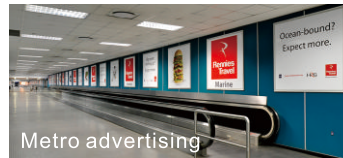
Roll up



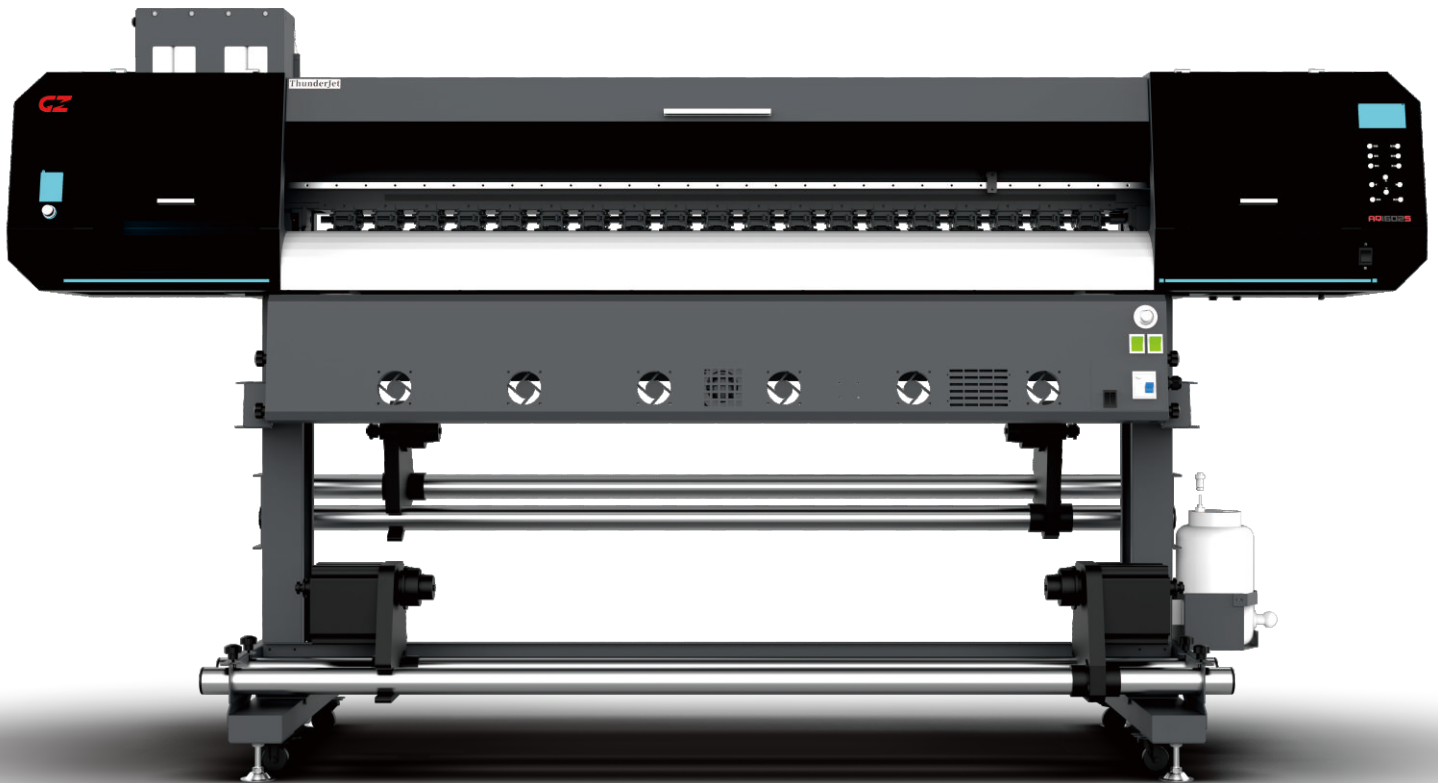
Poster



Floor graphics



Metro advertising



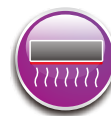
Waster Ink Level Alarm



One-Button Driven  
Pinch Roller



Anti Collision Unit



Efficient IR Dryer

# THUNDERJET AQ1601S

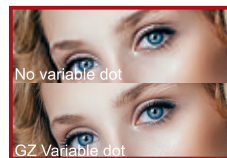
ITEM	SPECIFICATION		
Model	ThunderJet AQ1601S		
Print Head	Epson I3200 E1 print head		
Technology	Drop-On-Demand Piezo with Variable Dot		
Ink	EPI2-2 years durability eco solvent ink		
Color Config.	K.C.Y.M.		
Ink Supply System	Bulk ink supply system with ink cartridges		
Ink Tank	1500ml		
Printing Width	Max. 1600mm		
Media Type	Banner, Coated PP, Vinyl, PVC film.....		
Roll Diameter	Max. 300mm		
Roll Weight	Max. 50kgs		
Core Diameter	3 in (76.2mm) or 2 in (50.8mm)		
Printing Speed	Mode	Resolution	Output
	Draft	360x1200 dpi	37m <sup>2</sup> /h
	Production	360x1800 dpi	27m <sup>2</sup> /h
	High-res	720x1200 dpi	21m <sup>2</sup> /h
	Photo	720x1800 dpi	19m <sup>2</sup> /h
Data Interface	External:Ethernet;Internal:Fiber Optical		
Working Environment	Temp.23°C~29°C, Humidity:50%~80%		
Software	FlexiPRINT/Onyx(Optional)...+GZ Printer Manager		
Power	Single phase, 50Hz/AC, 220V±10%, 6.7A(Printer)+14.6A(IR Dryer)		
Packed/ Installed Size	LxWxH(mm): 2920x1000x750/2765x810x1530		
G.W./ N.W.	290kgs/190kgs		

Specifications are liable to change without prior notice. The printing speeds are measured in 1.6 m width printing.



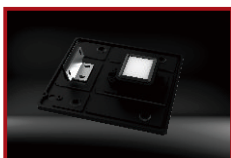
### Genuine Epson I3200 E1 print heads

Compared with Epson DX5, Epson I3200 has almost doubled NPI, higher fire frequency, greater effective print width & smaller installation space, which enables faster printing speed.



### GZ Variable Dot Technology

GZ Variable Dot Technology delivers flawless skin tone, smoother gradient, crisp text and intricate detail without compromising speed.



### Optimized Cleaning System

Newly designed Capping & Wiping System with one-pass wiper speeds up the print head maintenance with much lower noise. It maintains the print heads status to achieve perfect output.



### Precise & Adjustable Stepping System

One-piece grid roller with pressure adjustable pinch rollers assure accurate and wrinkle-free media stepping for different thickness of materials.



### Intelligent Heating Unit

New-developed heating unit for ink supply system and print head ensures smooth ink flow and stable jetting performance, especially in the cold season.



### High-end Configuration of Movement System

Germany brand-Igus chain ensures low noise, less vibration and high durability for carriage movement.

## Gongzheng Group Co., Ltd.

Add: Miaobei Village, Yongjia County, Wenzhou City, Zhejiang Province, China 325105

Tel: +86-577-67319778

Email: gzsales@gongzheng.com

Web: www.gongzheng.com



@GONGZHENG GROUP

### Authorized distributor: